

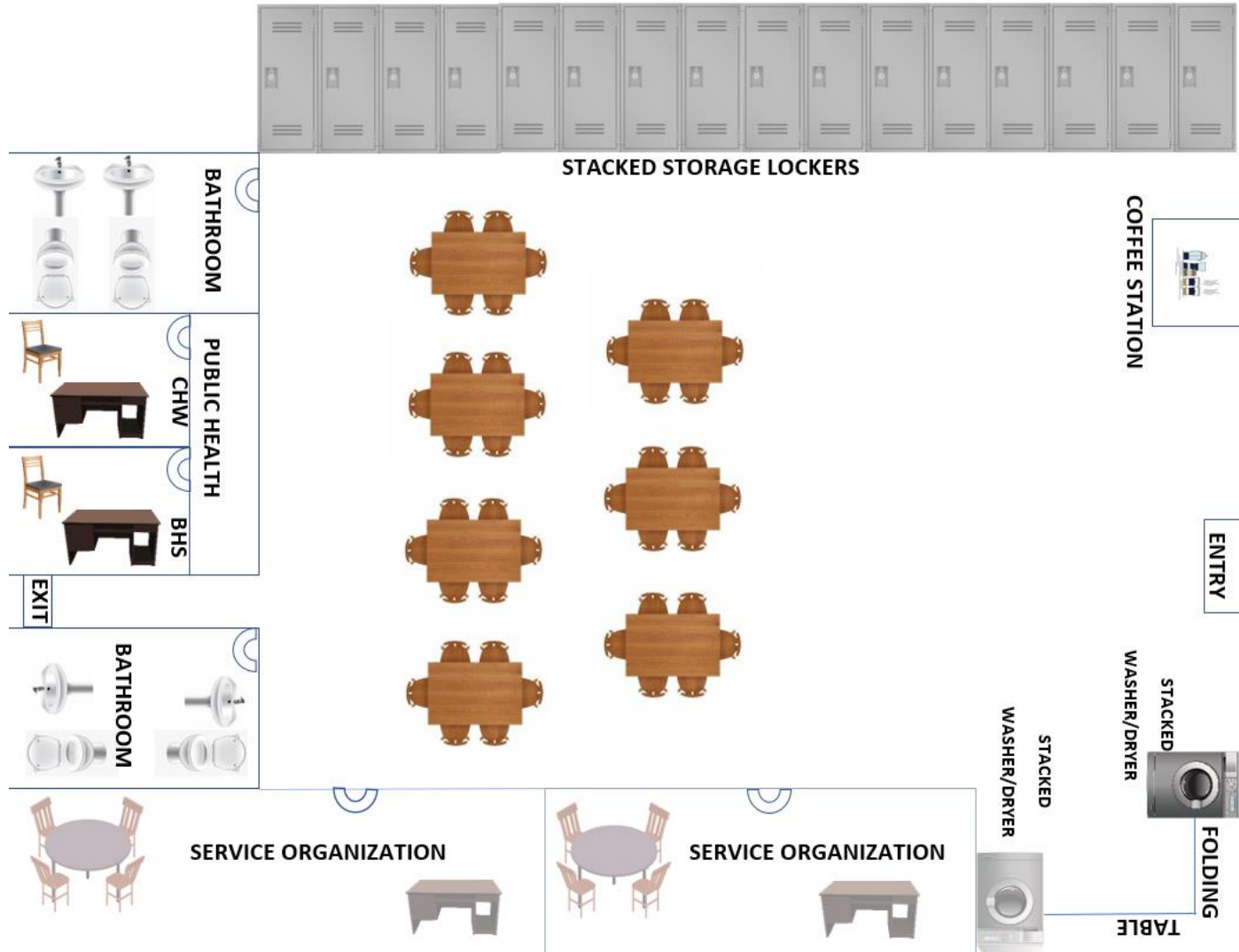
# PROJECT DESCRIPTION



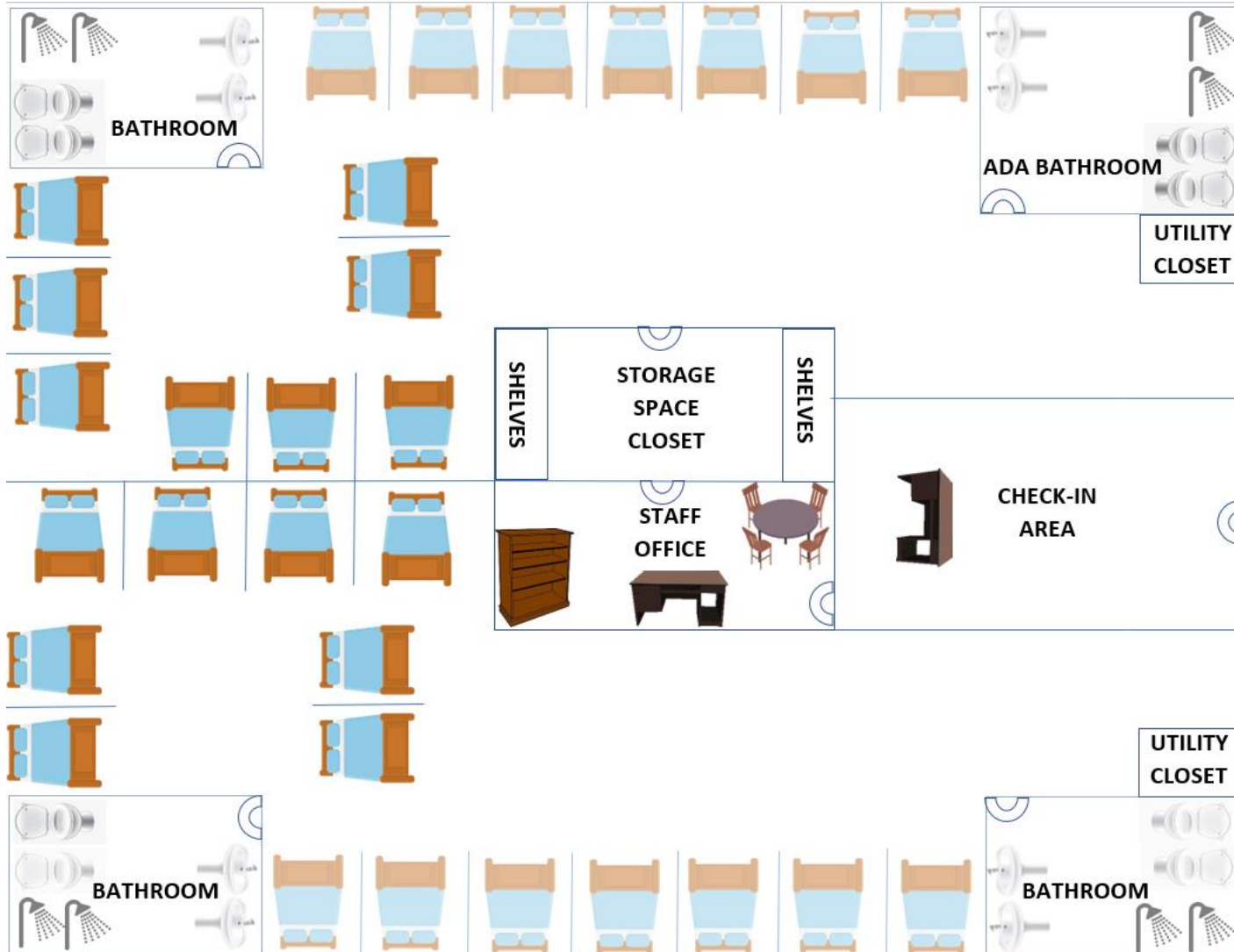
- 30 shelter beds for men/women  
Showers available for men/women  
that are not staying in the  
shelter
- 6 single rooms for transitional housing
- 2 studio apartments for couples for  
transitional housing
- Resource Center
  - 2 private offices for service  
providers
  - Behavioral Health Specialist office
  - Community Health Worker office
  - Storage Lockers
  - Public restrooms
  - Washer/Dryers available for public
  - Resource floor can be used as  
warming/cooling station



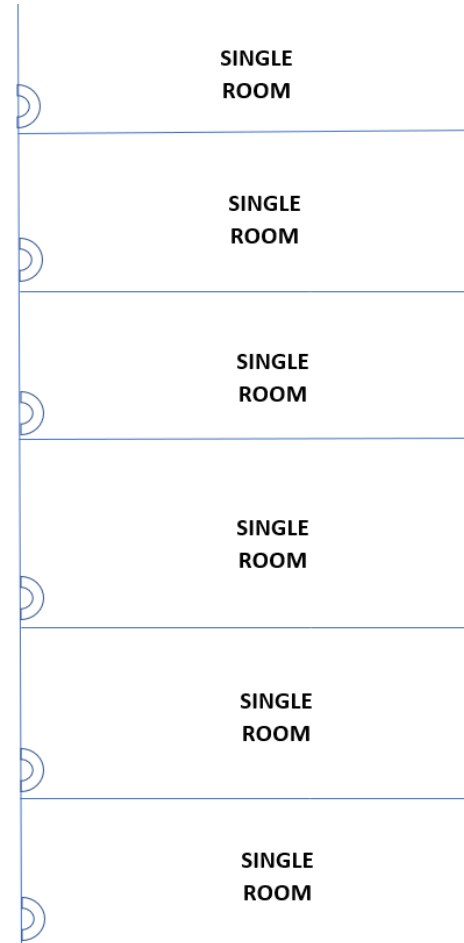
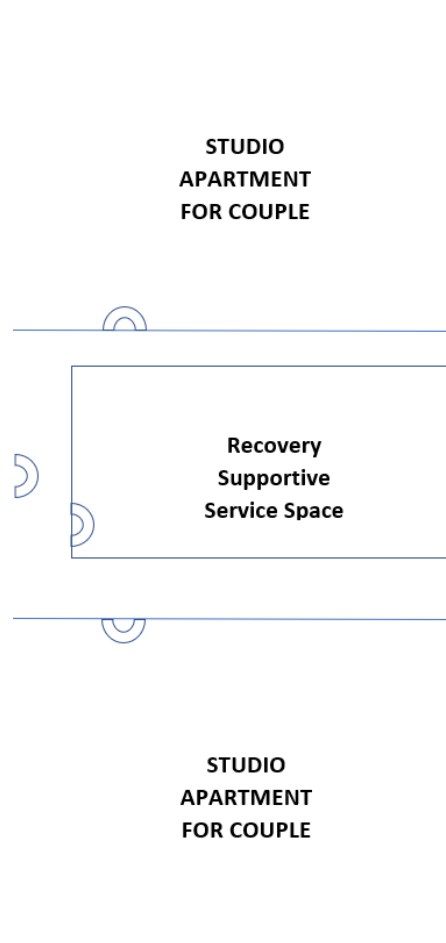
# 1<sup>st</sup> FLOOR RESOURCE CENTER



# 2<sup>nd</sup> FLOOR SHELTER



# 3<sup>RD</sup> FLOOR TRANSITIONAL HOUSING



# CAPITAL COST

- **Total Project Estimated Cost: \$3.8 million**
- Annual Maintenance: \$150,000
- Soft Costs (Architecture, Engineering, legal, permits, fees): \$125,000
- Bid Specification Preparation: \$75,000
- Construction: \$2,200,000
- Final Design: \$150,000
- Furniture & Fixtures: \$300,000
- Landscaping: \$75,000
- Planning/Feasibility Study: \$75,000
- Preliminary Design: \$65,000
- ROW/Land Acquisition: \$200,000
- Utility Work/Coordination: \$385,000

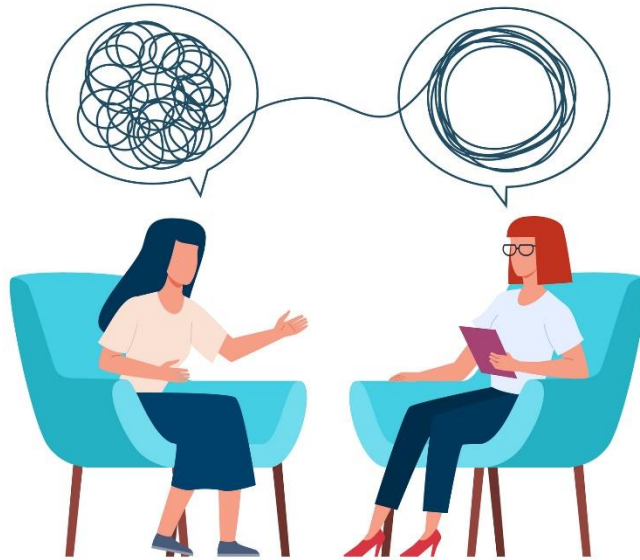


# OPERATIONAL COSTS

General Maintenance: \$120,000

Other: \$1,500,000

Utilities: \$75,000



**Total: \$1.695 Million  
annually**

# SUSTAINABILITY

| GRANTS   | TRUST FUNDS      | MEDICAID                                   | OTHER                     |
|--|------------------|--|---------------------------|
| Emergency Solutions <ul style="list-style-type: none"> <li>• Street Outreach</li> <li>• Housing Stabilization</li> </ul> | Opioid Abatement | Youth Peer Support                         | Rent-Transitional Housing |
| Community Health Worker Equity   |                  | Recovery Support: Individual Peer Recovery |                           |
| NH Charitable Foundation   |                  | Recovery Support: Group Peer Recovery      |                           |
| HUD- Community Development Fund  |                  | Recovery Support: Individual Recovery      |                           |
|  |                  | Recovery Support: Group Recovery           |                           |